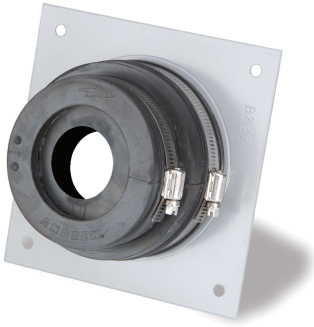


## Single Entrance Assembly for 1-5/8 in coaxial cable



### Product Classification

**Product Type** Entrance panel

### Dimensions

**Height** 127.00 mm | 5.00 in  
**Nominal Size** 1-5/8 in  
**Width** 127.00 mm | 5.00 in

### General Specifications

**Number of Ports** 1  
**Panel Type** Single  
**Color** Gray  
**Entry Panel Port Size** 101.6 mm | 4.0 in  
**Includes** Boot | Entry cap | Hardware | Port  
**Material Type** Aluminum  
**Ordering Note** CommScope® non-standard product  
**Package Quantity** 1

### Mechanical Specifications

**Weather Resistance Test Method** 04AS00-03.9.0 | IEC 60529:2001, IP66

### Packed Dimensions

**Height** 381.0 mm | 15.0 in  
**Length** 381.0 mm | 15.0 in  
**Shipping Weight** 0.95 kg | 2.10 lb  
**Width** 76.2 mm | 3.0 in

### Regulatory Compliance/Certifications

Agency	Classification
--------	----------------

# SCE-158

---

ISO 9001:2015      Designed, manufactured and/or distributed under this quality management system

